



azienda agricola  
**COLORNESE**  
science for growers

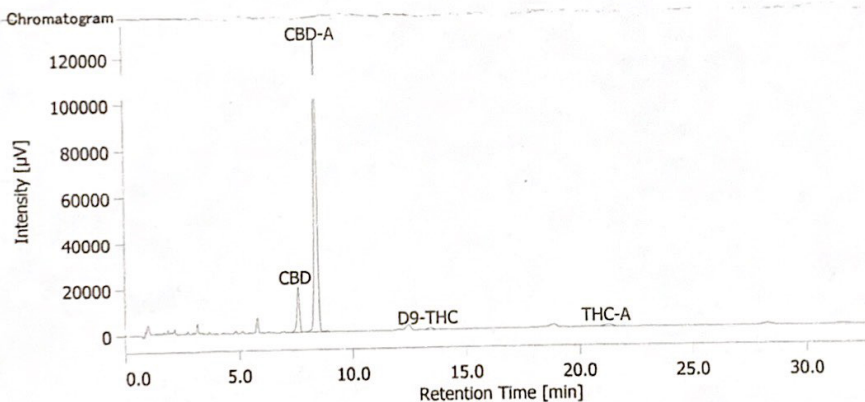
## Analisi Cannabinoidi

ID  
Nome campione

HQ-19521-GJ (RID M2)-CH1  
HARLEQUINN

Cliente  
Data analisi

5/25/2021 1:27:33 PM



Cannabinoide	%	CBD TOTALE	THC TOTALE
CBD	0.75		
CBD-A	2.74		
D9-THC	0.07		
THC-A	0.06	3.15	0.12

$$\text{THC (tot)} = (\text{THCA} * 0.877 + \text{THC})$$

$$\text{CBD (tot)} = (\text{CBDA} * 0.877 + \text{CBD})$$

Analisi per uso interno. Non ha valore legale.